

## A DUAL APPLICATION METHOD

For a faster, more effective action



1. APPLY THE MASCARA  
TO EYELASHES AND  
EYEBROWS

2. APPLY THE EYELINER  
TO THE ROOT OF THE  
LASHES

### Application:

Morning and evening  
on clean, make-up free  
and dry eyelashes and  
eyebrows, ideally for a  
period of 3 months.

### INDICATIONS

Accompanying certain treatments,  
particularly chemotherapy.

Aesthetic, for longer and stronger lashes

Rarefaction or loss of age-related skin appendages

# INFINI-CILS®

AN EYE CARE COSMETICS INNOVATION  
PROMOTING THE GROWTH OF EYELASHES  
AND EYEBROWS



HAUTE TOLÉRANCE

PARIS

Recommended by dermatologists and cancer centers

LABORATOIRES CONTAPHARM - HAMEAU DE VULAINES - 77390 YÈBLES - FRANCE  
Tél. +33 (0)1 64 25 03 33 - FAX +33 (0)1 64 06 37 72 - email : contapharm@contapharm.com - web : www.contapharm.com

Health - Beauty  
Active high tolerance formulated for you



# INFINI-CILS®

PROMOTING THE GROWTH OF EYELASHES  
AND EYEBROWS



DOC107 - 02/19

**HIGH TOLERANCE FORMULA**  
**SENSITIVE EYES - CONTACT LENS WEARERS**  
**Paraben-free**

# EYELASHES AND EYEBROWS

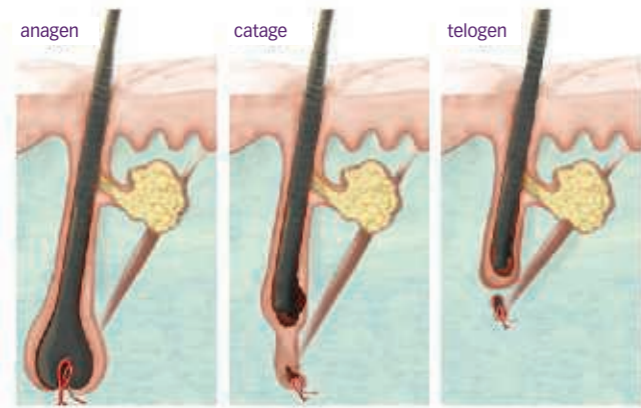
Protecting your eyes, eyelashes and eyebrows are key elements that give your eyes their intensity and depth

## EYELASH GROWTH CYCLE:

The normal growth cycle for eyelashes is approximately half that of hair.

There are 3 stages in the hair-growth cycle:

- 1 - A growing phase, called **Anagen**, of 2 to 5 months
- 2 - A phase where it stops growing, called **Catagen**, of approximately 15 days
- 3 - A resting phase, called **Telogen**, of 4 to 9 months



After the age of 40, lashes become fewer and thinner which increases with age. This is not as a result of the number of follicles, which is set from birth, but from a shortening of hair follicle cycles with age. (HABIF T.P Clinical Dermatology 2003).

**It is important to take care of your eyelashes and eyebrows to keep them dense, long and in good condition.**

# INFINI-CILS

A high tolerance formula designed to stimulate and prolong the growth of eyelashes and eyebrows safely with a proven effectiveness.

## 1 - SAFE ACTIVE INGREDIENTS

- a - A tripeptide: Biotinyl-GHK (Glycyl – Histidyl – Lysine)
- b - Panthenol, vitamin B5 precursor promoting the anchoring of the eyelashes in the follicle
- c- Highly bioavailable organic silicon
- d - A cystine derivative, Tetrasodium Disuccinoyl Cystine (T.D.C) a source of energy

## 2 - A COMPREHENSIVE ACTION AND PROVEN EFFECTIVENESS

### A- Stimulates and accelerates growth for denser and longer eyelashes and eyebrows:

Encourages proliferation (a): + 58% at 2 ppm and + 121% at 5 ppm  
Boosts the energy metabolism of hair follicle keratinocytes:  
+35% of intracellular ATP in keratinocytes after 4 hours of contact (d).  
Provides the building blocks necessary for the formation of eyelashes and eyebrows (c – d)

### B- Prolongs the life cycle of eyelashes and eyebrows

Maintains the proliferative activity of the epithelial root sheath of the eyelashes and eyebrows after 14 days (a).  
Delays the cellular ageing of hair bulb keratinocytes (a).

### C- Improves the anchoring of the hair shaft in the bulb

Stimulates adhesion molecules (a – b – c)  
Reduces the loss of eyelashes and eyebrows

### D- Promotes stronger growth of eyelashes and eyebrows

Increases the density of hair growth keratin (b – c – d)



## Effectiveness and tolerance of the formulation:

Clinical Study (Eurofins ATS – 28 days on 20 volunteers/Study 003TUDE20V4516)

### Effectiveness on eyelashes:

After just 28 days of applying the product, eyelashes are:

**Denser by 50%**  
**More voluminous by 45%**  
**Longer by 32%**  
**Thicker by 27%**

It should be noted that the product's significant effects appear after a month and a half of use. For best results, the product should be applied morning and evening, for a period of 3 months.

### Tolerance:

Very good eye tolerance, no side effects

**Infini-cils, a safe and effective product with no negative impact on the ocular sphere\***

\*with products of the same indication which contain prostaglandins or derivatives, it is quite common, apart from the underlying intraocular hypotensive effect, to note a darkening of the iris, blue eyes can become brown. Periocular hyperpigmentation but also a resistance to glaucoma treatments or even blurred vision can occur.