

# BOX ROSE®



In the oncology field, thanks to the high-tolerance of the brand Eye Care Cosmetics the Laboratoires Contapharm is the partner of anti-cancer centers for supportive care.

Indeed, the exceptional tolerance of Eye Care Cosmetics products is particularly well adapted to patients under oncology treatment, who are usually weakened by side reactions due to the treatment.

In this context, Laboratoires Contapharm created **Box Rose®** a complete range of supportive cosmetic care to overcome the most frequent side reactions (cutaneous dryness, brittle nails, disturbed hair and nail growth, altered complexion, etc).

For further information, please contact us at:  
[contapharm@contapharm.com](mailto:contapharm@contapharm.com)



HAUTE TOLÉRANCE

PARIS

[www.eyecare.fr/en](http://www.eyecare.fr/en)



HAUTE TOLÉRANCE

PARIS

# BOX ROSE®

High tolerance dermocosmetic supportive  
care for a better life under oncology  
treatment



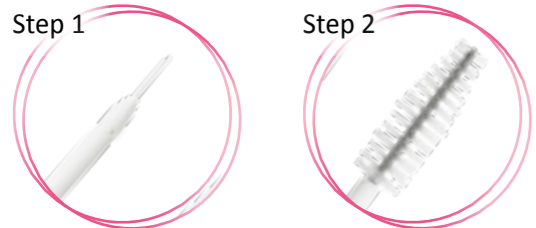
LABORATOIRES CONTAPHARM - HAMEAU DE VULAINES- 77390 YEBLES - FRANCE  
Tél. +33(0)1 64 25 03 33 - [www.eyecare.fr](http://www.eyecare.fr) - email : [contapharm@contapharm.fr](mailto:contapharm@contapharm.fr)

# Disturbed eyelashes and eyebrows

Treatments can lead to weakening and fall out of eyelashes and eyebrows. It is important to limit this phenomenon to protect the eyes and restore a beautiful line of eyelashes and eyebrows.

## Infini-cils

Before, during, and after cancer treatment, this eye care treatment slows down the loss of eyelashes and eyebrows and reactivate their growth to regain denser, stronger, and longer lashes or eyebrows and eye protection.

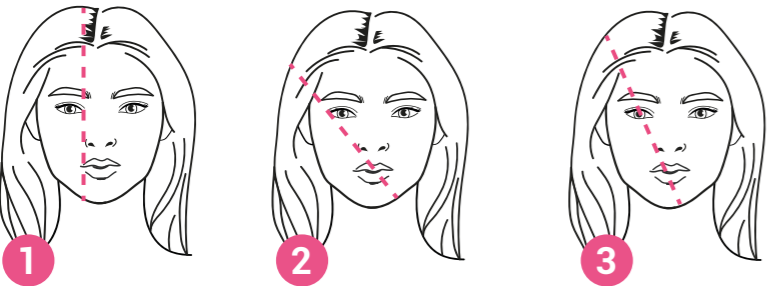


**How to apply?**  
 1- at the root of the lashes with the eyeliner  
 2- on the eyelashes and eyebrows with the mascara

## Waterproof eyebrow liner



Waterproof eyebrow liner, enriched in silicon and long-lasting, restores colour and shape to sparse or absent eyebrows.



**How to apply?**  
 1 - Where to begin? Trace an imaginary vertical line from the flare of the nostril to the interior corner of the eye.  
 2 - Where it should end? Trace a line from the flare of the nostril to the exterior corner of the eye.  
 3 - The highest point: to do so, trace an imaginary line from the flare of the nostril to the outer edge of the pupil.

# Brittle nails

Chemotherapy treatments can have more or less significant side effects on the nails. Nails can become weakened, brittle, and split easily. In some cases, this can even lead to the nail becoming detached.

## Strengthening oil for nails and cuticles

This blend of 3 vegetable oils (Castor oil, Apricot, and Macadamia) combined with vitamin E and silicon restores suppleness to the sensitive cuticles, strengthens and nourishes the nails.



## Protective base coat



This base coat enriched in silicon and trace elements (sulfur - calcium iron - zinc, and vitamin E) protects, strengthens and smooths the surface of the nail.

It leaves a protective film over the nail which prevents yellowing of the nails with coloured pigments contained in enamel.

## Ultra Vernis Silicon Urea

Rich in silicon, to strengthen the nail and urea to combat dryness, this nail polish (applied in 2 coats) protects the nails against UV exposure to prevent nail-loss or alteration. 48 shades.



**Take care of your nails during treatments**

*Begin the procedure the day before the first session and carry on 6 months after the last treatment.*

- 1 - Remove any old nail polish using an acetone-free nail polish remover.
- 2 - Apply 1 coat of Protective Base Coat.
- 3 - Then apply 2 coats of coloured Ultra Vernis.
- 4 - You can finish with a coat of Top Coat Silicon to length its hold and to give it a shiny or a matte look.
- 5 - Remove all the nail polish and repeat the procedure once the polish begins to flake off.

# Cutaneous dryness - Reactive skin

Chemotherapy treatments alert the barrier function of the skin, making it drier and more sensitive.

## Balancing Skin Care Moisturizer

This high tolerance skincare, enriched in urea, Jojoba oil and honey extract moisturizes and nourishes the skin while visibly restoring suppleness.



**Tip**  
 Apply in the evening for soothing the skin or in alternation with the Nutritive cream or the Anti-redness cream.

## Altered complexion

During cancer treatment, the complexion can become dull and pale and requires the application of touches of light to restore brightness and a healthy glow.

## Complexion Radiance Cream

Enriched in dermo-vitamins (A, C, E, F, B5, PP) and moisturizing active ingredients (hyaluronic acid, urea, Jojoba, and Macadamia vegetable oils), this cream gives suppleness and comfort to the skin. Containing brightening pigments, it brings a warm, radiant glow to the complexion.



## Bronzer Powder

This powder enriched with fine brightening nacres brightens the complexion, giving it a tanned appearance and a healthy glow without exposure to the sun.



**How to apply?**  
 Using a light touch to sweep a «3» shape with a powder brush, along the temples, cheeks, and base of the jawline.